

Assignment 4.3

Scores from a ten question quiz. A score of 6 or higher is passing.

1 <sup>st</sup> Period Math	2 <sup>nd</sup> Period Math	3 <sup>rd</sup> Period Math
6, 4, 3, 7, 5,	3, 3, 8, 6, 6,	9, 8, 10, 5, 9,
9, 5, 4, 6, 6,	9, 5, 8, 5, 3,	7, 8, 9, 8, 3,
8, 5, 7, 3, 6,	5, 5, 7, 5, 7	8, 10, 8, 7, 5
2, 8, 7, 10, 9		

1. Create a two way frequency table of the data, then calculate the relative frequencies.

Data

	1 <sup>st</sup> period	2 <sup>nd</sup> period	3 <sup>rd</sup> period	Total
Passed				
Failed				
Total				

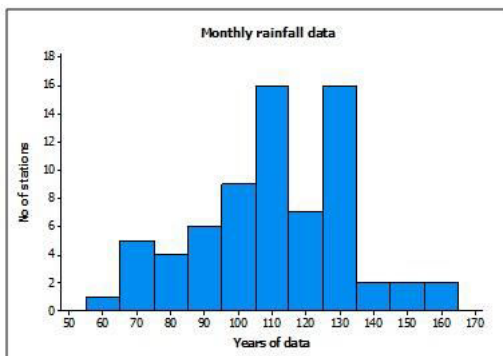
Frequencies

	1 <sup>st</sup> period	2 <sup>nd</sup> period	3 <sup>rd</sup> period	Total
Passed				
Failed				
Total				

- Lightly shade or highlight the joint frequencies.
- If you wanted to see how many students in all three classes combined passed the quiz, where would you look?
- Which class might need more review before the test?

Refresh Your Memory

5. Describe the shape of the histogram.



Mode:

Skew:

Outliers:

Variability:

6. Use the given data to make a frequency table and histogram, then make three observations.

1 <sup>st</sup> Period Math	2 <sup>nd</sup> Period Math	3 <sup>rd</sup> Period Math
6, 4, 5, 7, 5,	4, 5, 8, 6, 8,	9, 8, 10, 5, 9,
9, 5, 4, 6, 6,	9, 5, 8, 5, 1,	7, 8, 9, 8, 5,
8, 5, 7, 5, 8,	5, 5, 7, 5, 7	8, 10, 8, 8, 5
1, 8, 7, 10, 9		

Score	Frequency
0 - 1	
2 - 3	
4 - 5	
6 - 7	
8 - 9	
10-11	

Give 3 observations of the histogram.

a.

b.

c.

